

EXTRA! Special buying guide for flooring, surfaces, cabinetry

house beautiful **KITCHENS/BATHS**

WINTER 1996-97

PROBLEM SOLVING • DESIGN TRENDS • FINANCING • NEW PRODUCTS

GOOD ENOUGH TO LIVE IN!

Make your kitchen a haven for dining, entertaining, and relaxing.

SLEEK SANCTUARIES

Create a luxurious, private master bath

HOW TO:

Buy a cooktop
Organize kitchen workspace
Finance your remodeling

15

PAGES OF SMALL KITCHENS

WITH BIG IDEAS:

✓ STORAGE ✓ LIGHT ✓ LAYOUT

Hearst Special Publications



DISPLAY UNTIL JAN. 21, 1997

COMPACT & **CONVENIENT**

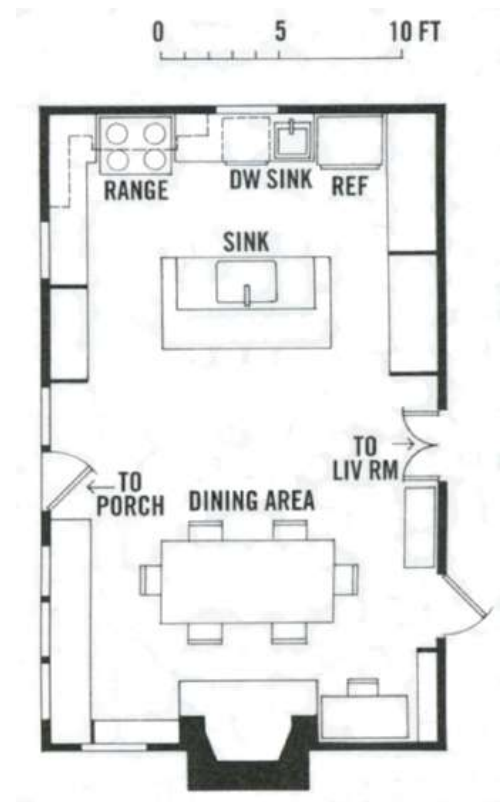
too confined?
annex the living area



Cooking, eating, and entertaining combine easily in a new room inspired by mid-19th-Century aesthetics

PRIOR TO BUILDING THEIR own home in Sag Harbor, N.Y., Doug and Susan Moyer had lived in 2 houses in the 1840s in the Long Island town. In these old Shingle-Style dwellings, a combined kitchen and dining area is the heart of the home. The Moyers wanted to re-create that historic look in their new residence, without restricting themselves to the modest footage typical of the period. Doug, the architect on the project, borrowed from history to design the common area as one large space for

food preparation, dining, and socializing. “You can stand at the sink and do the dishes and converse with people in the rest of the room,” he says. An island with a preparation sink and ample work counter sets the kitchen off from the dining area. On the kitchen side, a 4’-wide isle separates the island from the range and the 30”-deep countertop. This space allows two or more people to work in the zone at the same time; there is still enough room to maneuver. On the other side of the island, the dining table rests in front of the fireplace, which is a central focus of the room. In the winter, the Moyers replace the dining table with a sofa and spend many of their evenings after dinner relaxing in front of the fire.



PHOTOGRAPHS BY MARK SAMU, MARGARET McNICHOLOS; DRAWING, NATALIE SEIGEL.



Cabinet and drawer space abounds in the large island, opposite; a wide kneehole invites a guest to pull up a seat. Framing the stove, above open shelving affords a decorative display of cooking staples and accountments. Six-over-one double-hung windows admit plenty of light into the multifunctional room, which is organized around large fireplace. The 9' ceiling contributes to the spacious ambiance; combined kitchen and dining areas measure 400 sq. ft. (see plan).

